



SOUTHEAST ALASKA

TRANSPORTATION PLAN

SOUTHEAST CONFERENCE TRANSPORTATION COMMITTEE UPDATE

June 9, 2025





Southeast Alaska Transportation Plan Update

- 20-year multimodal plan to guide future public investments in transportation infrastructure in Southeast Alaska
- Improve mobility for residents, goods, and services throughout Southeast Alaska, considering area's unique transportation needs and challenges
- Includes all transportation modes, will integrate with the recently adopted Alaska Marine Highway System Long-Range Plan
- Last update was adopted in 2004, so a lot of changes to consider!

FAMILY OF PLANS

CONTINUING

The state continually updates transportation plans

COMPREHENSIVE

Comprehensively considering a number of planning factors

COOPERATIVE

Cooperating with stakeholders throughout communities

POLICIES,
GOALS &
ACTIONS

FUNDING
DISTRIBUTION
& INVESTMENT
LEVELS

MODAL &
SYSTEM
PLANS

REGIONAL
PRIORITIES,
STRATEGIES,
ACTIONS, &
PROJECTS

1 LONG-RANGE TRANSPORTATION PLAN
Multimodal Transportation Plan

2 STRATEGIC HIGHWAY SAFETY PLAN

3 TRANSPORTATION ASSETS MANAGEMENT PLAN

**STATEWIDE TRANSPORTATION
IMPROVEMENT PLAN**

From LRTP: (1) Goals, Policies & Actions; (2) Regional Priorities; (3) Modal Opportunities

From LRTP:

- Goals & Objectives
- Modal Facts & Objectives

From Strategic Plans:

- Funding Distribution
- Fiscal Constraint
- Program Objectives & Criteria

REGIONAL, AREA, & CORRIDOR PLANS

From LRTP:

- Goals & Objectives

From Modal & System Plans:

- Modal Requirements
- Level of Service

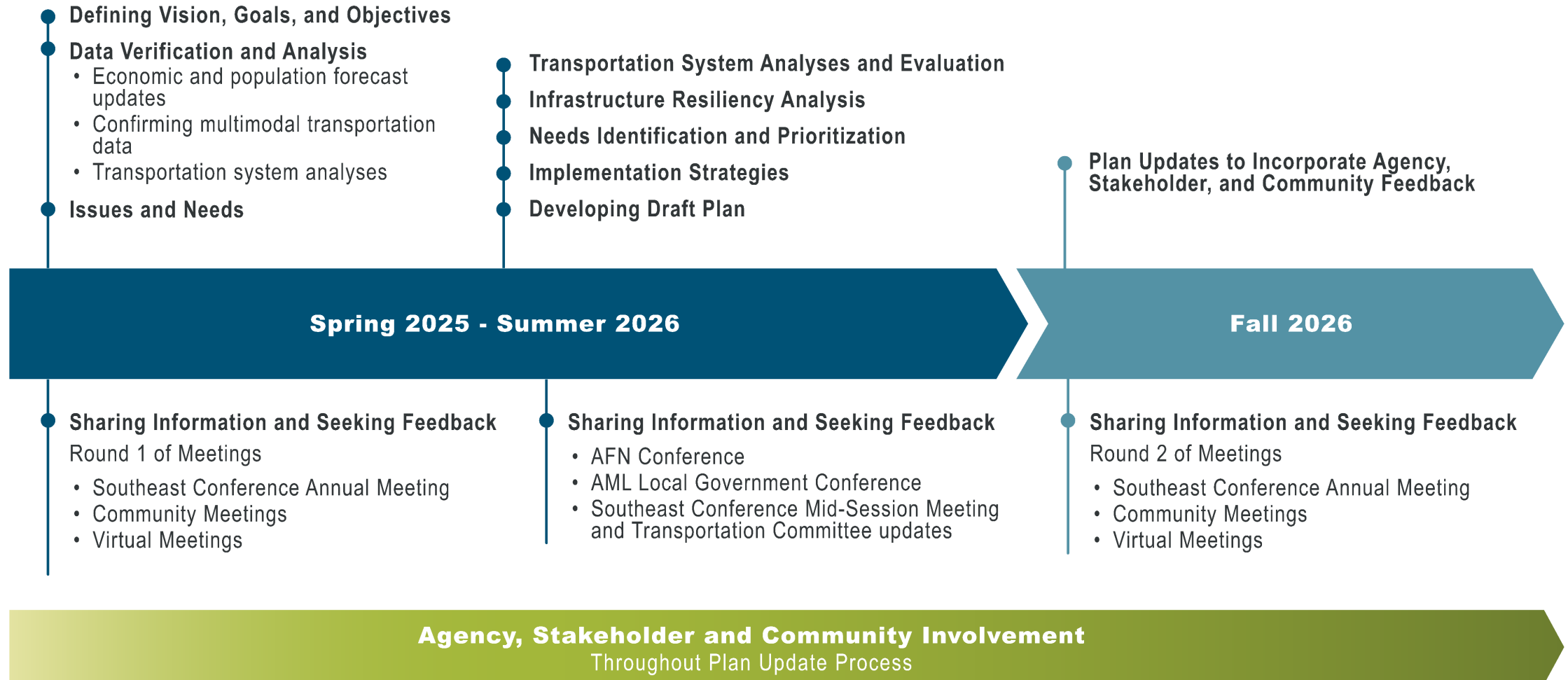
From Strategic Plans

- Funding Distribution
- Fiscal Constraint

PLAN AREA



STEPS AND SCHEDULE



GETTING INVOLVED



Website: www.southeastalaskatransportationplan.com



Sign up to our mailing list



We will provide regular updates to Southeast Conference events



Reach out to the project team seatp@dowl.com



THANK YOU!

Contacts:

- **Jill Melcher**, DOT&PF Project Manager, 907-465-4445
- **Renee Whitesell**, DOWL Consultant Project Manager, 907-562-2000
- **Morgan McCammon**, DOWL Public Involvement, 907-562-2000

✉ **Plan Email:** SEATP@dowl.com

